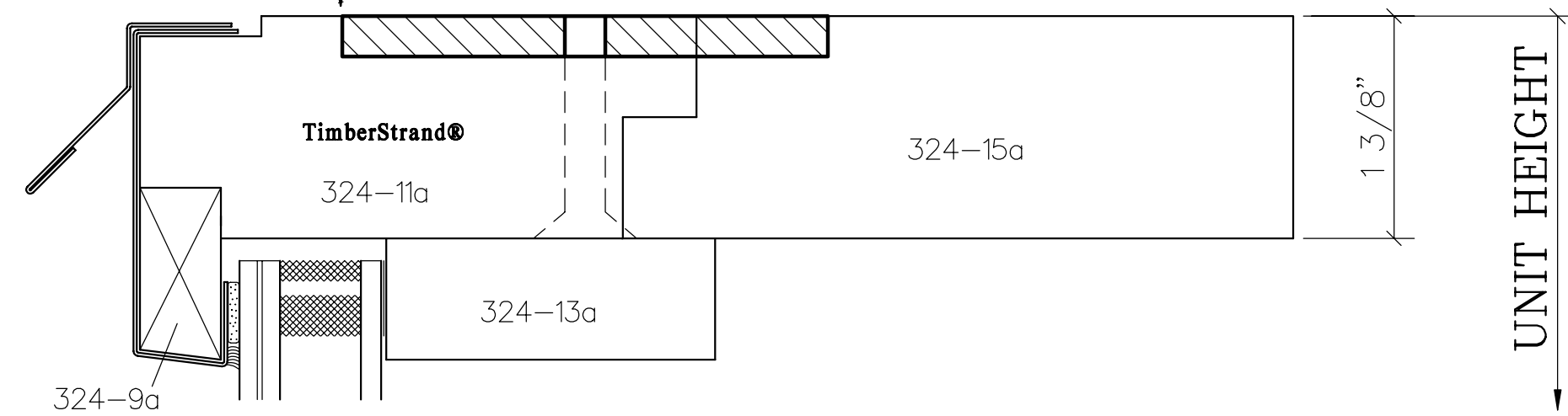
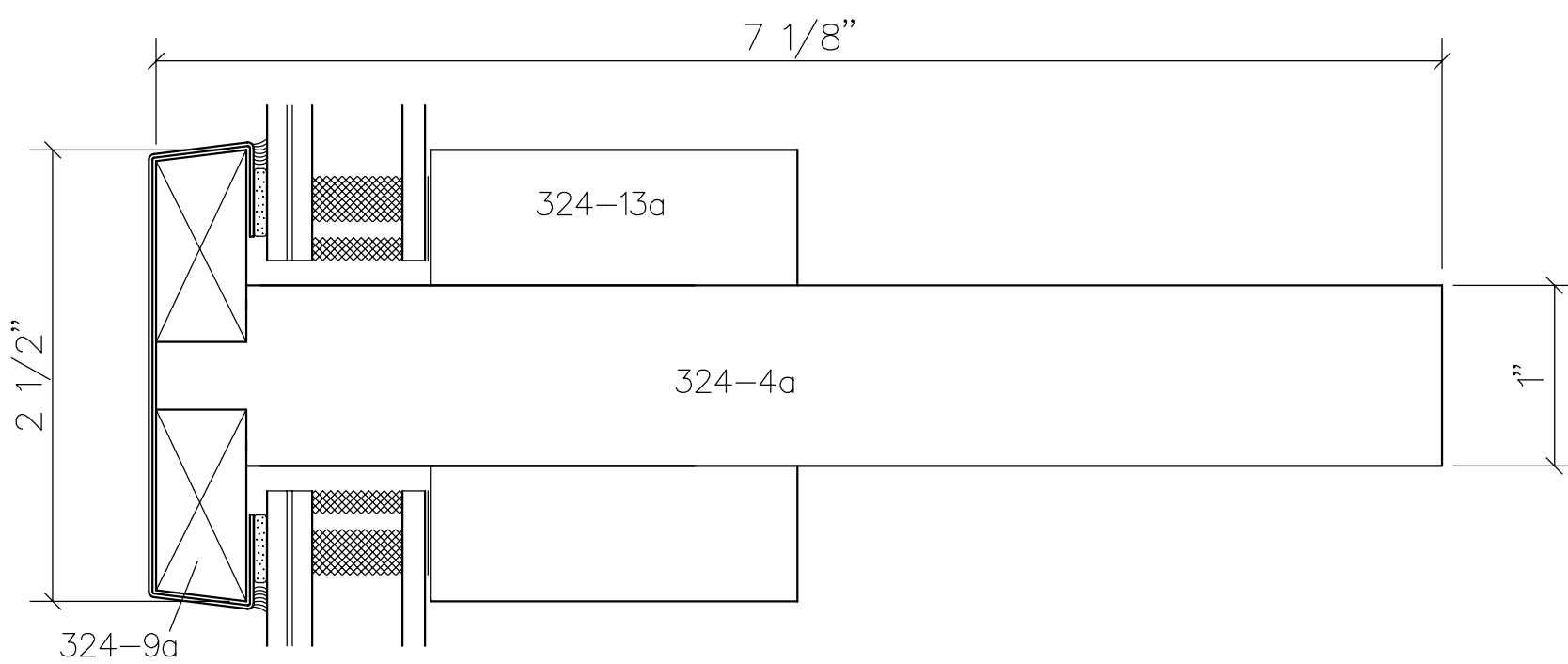


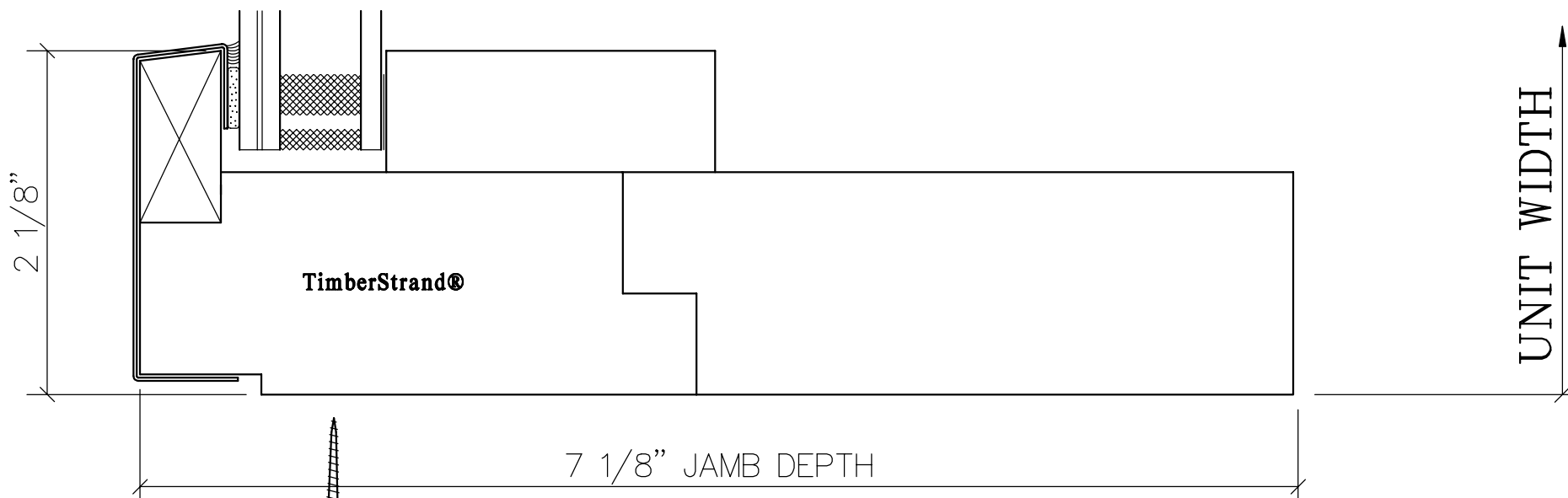
1" X 1 1/2" X 32 oz. COPPER NAILFIN @ FULL PERIMETER (SHIP LOOSE)
NAILFIN IS FOR POSITIONING AND ATTACHMENT ONLY. NO SEALING OR WATER PROTECTION IS OBTAINED THROUGH THE USE OF IT.
 (NAILFIN THICKNESS PLUS PAN HEAD SCREW CAN ADD UP TO 3/8" TO UNIT WIDTH & HEIGHT)



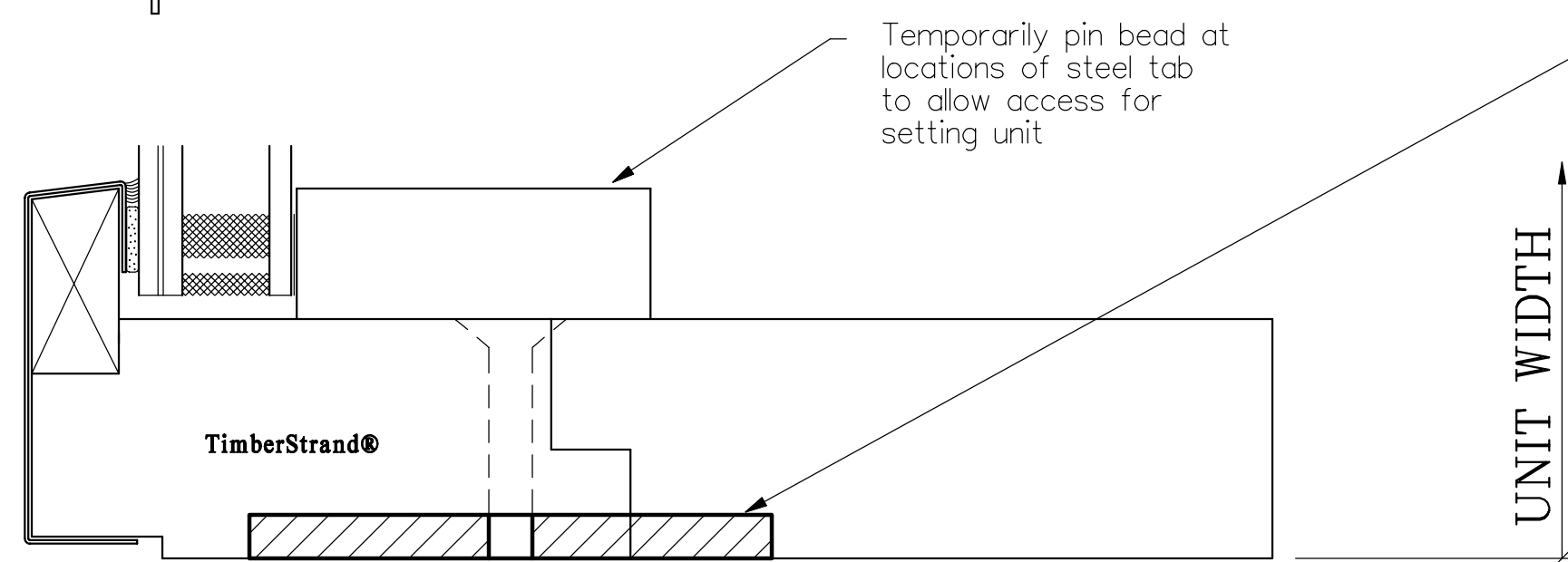
1 DIRECT SET HEAD
 FULL SCALE



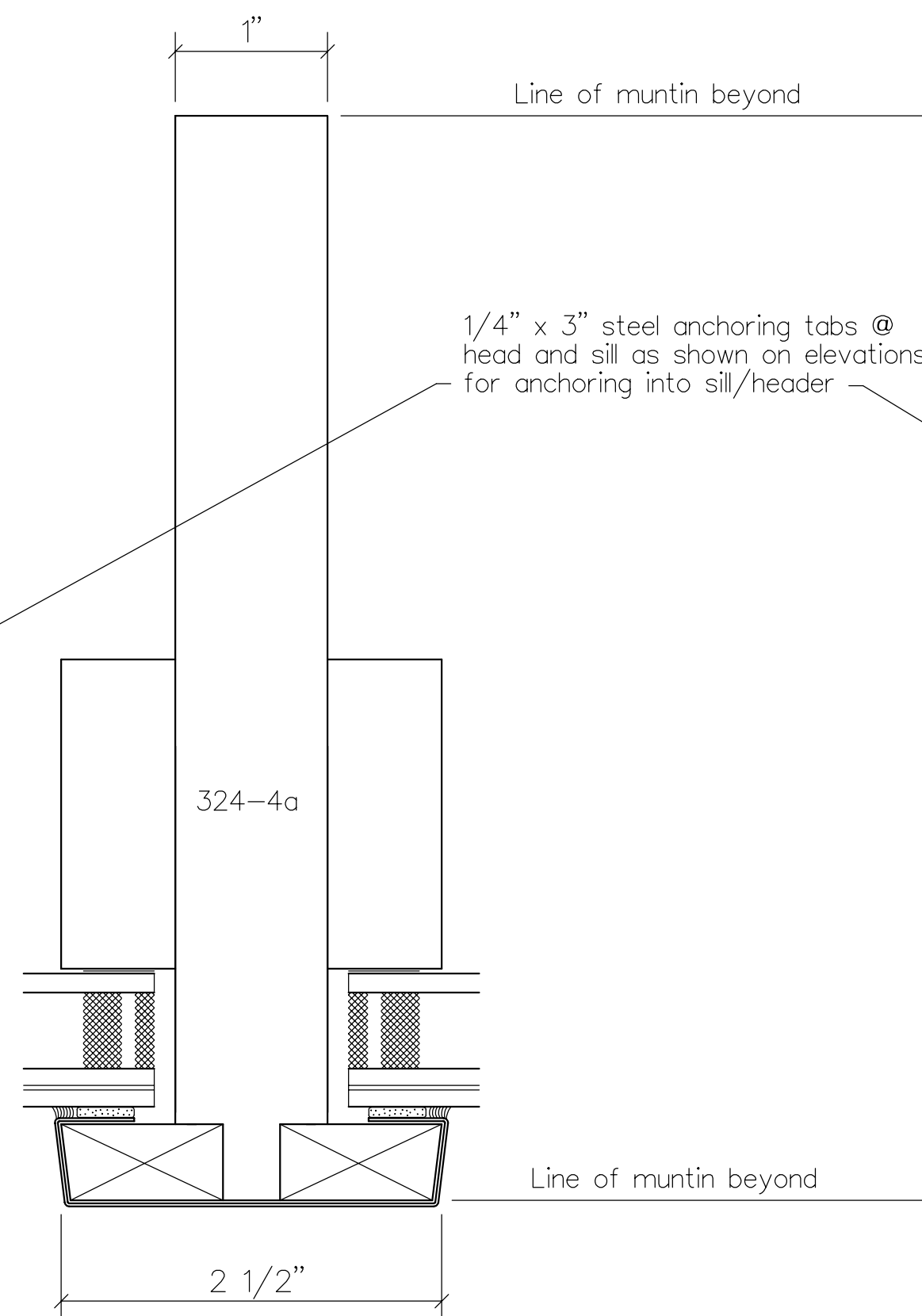
2 DIRECT SET MUNTIN
 FULL SCALE



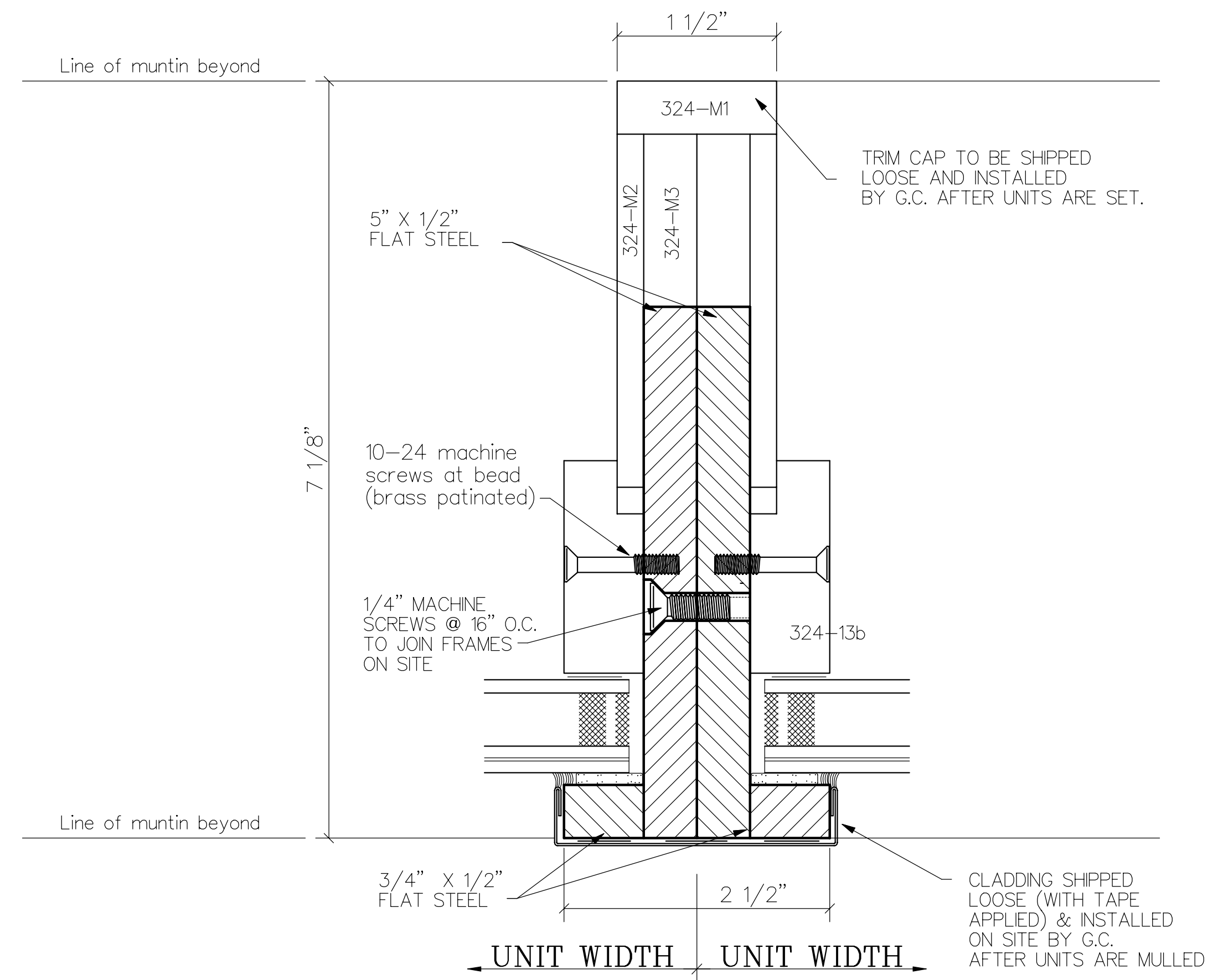
3 DIRECT SET JAMB
 FULL SCALE



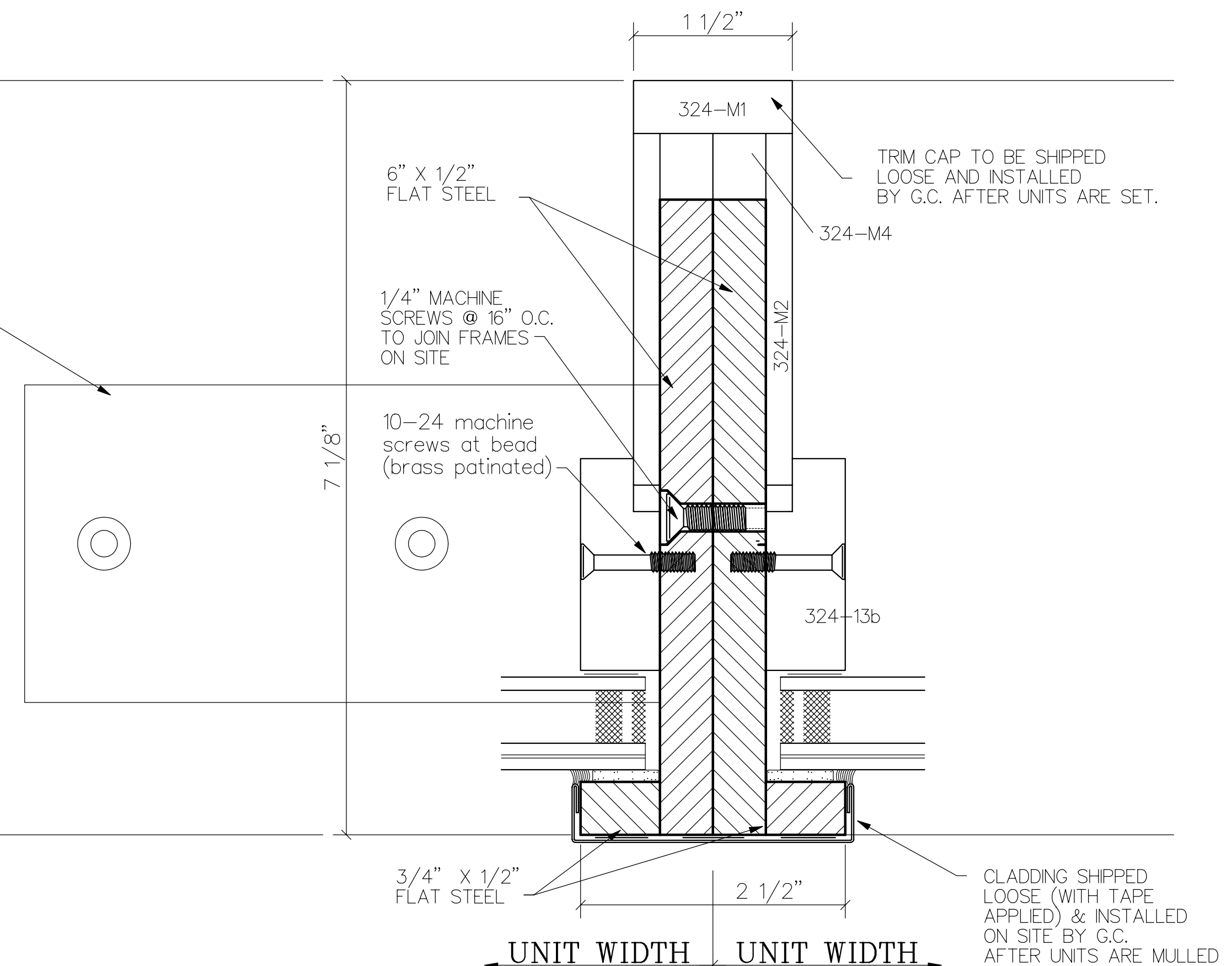
4 DIRECT SET SILL
 FULL SCALE



7 DIRECT SET MUNTIN
 FULL SCALE



5 VERTICAL MULLION



6 VERTICAL MULLION

POINT FIVE
 W I N D O W S

REVISIONS	
2/14/08	JU
2/18/08	JU

POINT FIVE WINDOWS, INC. 1001 Buckingham • Fort Collins, Colorado 80524 • (970) 482-6971	
LARSON RESIDENCE	
DIRECT SET DETAILS	
SCALE: FULL	APPROVED BY: [Signature]
DATE: 2/8/08	DRAWN BY: JU

DRAWING NUMBER: 08324-1c